

**NEW** Aster  
Mix

Type Downlight  
 Mounting Recessed  
 Material Aluminium  
 Adjustable Yes (30°/359°)  
 El. class / IP Class III / IP20 / IP54  
 El. class driver Class II  
 Warranty: see p.348

**Bridgelux Vero 10 LED (500mA)**

CCT 2700K / 3000K / 4000K  
 CRI Ra90 (Ra80 on request)  
 SDCM 3  
 Luminous Flux LED  
 2700K - Ra90: 1439lm (111lm/W)  
 3000K - Ra90: 1505lm (116lm/W)  
 4000K - Ra90: 1592lm (123lm/W)  
 Luminous Flux System  
 2700K - Ra90: 1295lm (100lm/W)  
 3000K - Ra90: 1355lm (105lm/W)  
 4000K - Ra90: 1433lm (111lm/W)  
 Beam angle 25° / 36° / 52°  
 LED Power 12.9W / 500mA (excl. driver)  
 System Power 14.8W / 500mA (incl. driver)  
 Forward voltage 23.4V (min.) - 25.9V (typ.) - 28.4V (max.)

**Bridgelux Dim-to-warm LED (more info see p.330)**

CCT Dim-to-warm 1800-3000K  
 CRI Ra90  
 Luminous Flux LED: 860lm - System: 774lm  
 LED Power 8.2W / 250mA (excl. driver)  
 System Power 9.4W / 250mA (incl. driver)

**DIM TO WARM**

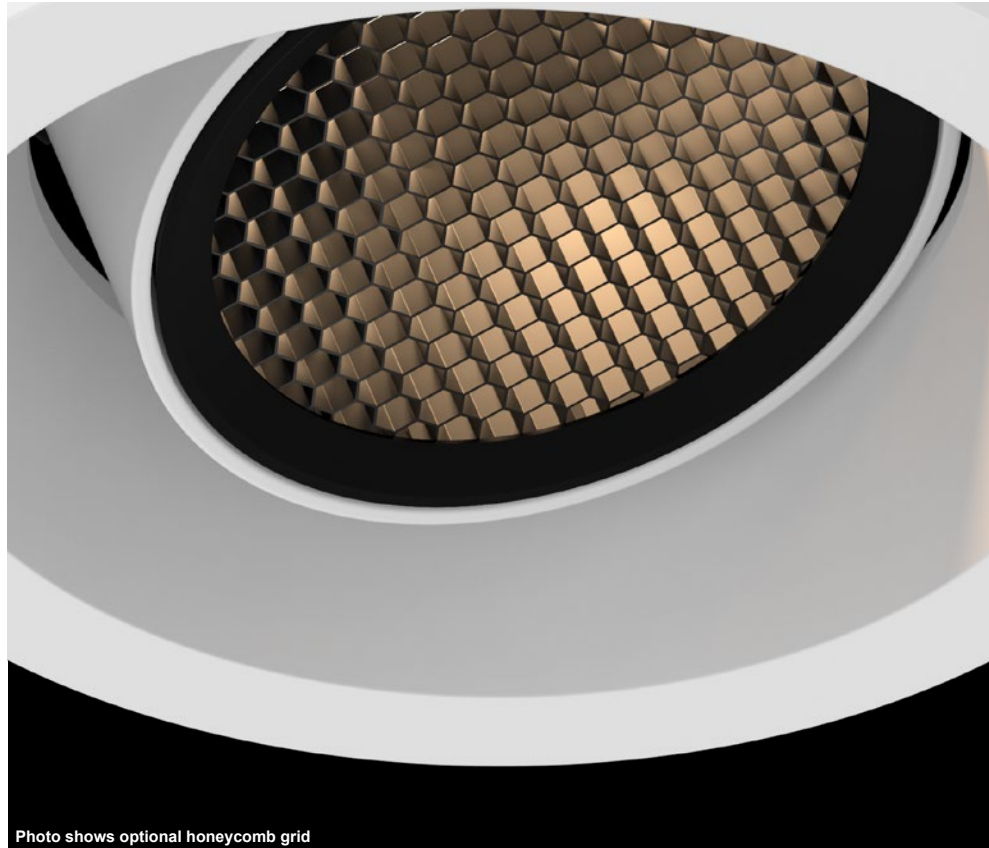
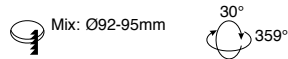


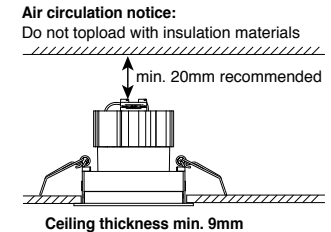
Photo shows optional honeycomb grid

**Driver:**  
 - Included in article number and included in price  
 - External/Remote installation

**Data sheets and wiring guide: see website**  
**Driver information: see p.334-335**

**Options**  
 Honeycomb Grid 1808.00.00  
 Provides more visual comfort

**On Request**  
 LED with CRI Ra97  
 Class A LED





## Aster Mix 1-Tone\*

### PRICES INCL. DRIVERS

#### Non dim 500mA (Driver 493.24.22 incl.)

2700K - Ra90 - 14.8W - 1295lm	1804.AA.24.927.XX-Y
3000K - Ra90 - 14.8W - 1355lm	1804.AA.24.930.XX-Y
4000K - Ra90 - 14.8W - 1433lm	1804.AA.24.940.XX-Y

#### 1-10V dim & Push dim 500mA (Driver 490.25.20 incl.)

2700K - Ra90 - 14.8W - 1295lm	1804.AA.25.927.XX-Y
3000K - Ra90 - 14.8W - 1355lm	1804.AA.25.930.XX-Y
4000K - Ra90 - 14.8W - 1433lm	1804.AA.25.940.XX-Y

#### DALI dim 500mA (Driver 490.26.20 incl.)

2700K - Ra90 - 14.8W - 1295lm	1804.AA.26.927.XX-Y
3000K - Ra90 - 14.8W - 1355lm	1804.AA.26.930.XX-Y
4000K - Ra90 - 14.8W - 1433lm	1804.AA.26.940.XX-Y

#### Mains dim 500mA (Driver 493.27.20 incl.)

2700K - Ra90 - 14.8W - 1295lm	1804.AA.27.927.XX-Y
3000K - Ra90 - 14.8W - 1355lm	1804.AA.27.930.XX-Y
4000K - Ra90 - 14.8W - 1433lm	1804.AA.27.940.XX-Y

#### DALI dim / Dim to Warm 1800-3000K (Driver 490.26.20 incl.)

DTW (DALI dim) - 9.4W - 774lm	1804.AA.26.dtw.XX-Y
-------------------------------	---------------------

#### Mains dim / Dim to Warm 1800-3000K (Driver 497.27.20 incl.)

DTW (mains dim) - 9.4W - 774lm	1804.AA.27.dtw.XX-Y
--------------------------------	---------------------



## Aster Mix 2-Tone\*

### PRICES INCL. DRIVERS

#### Non dim 500mA (Driver 493.24.22 incl.)

2700K - Ra90 - 14.8W - 1295lm	1803.AA.24.927.XX-Y
3000K - Ra90 - 14.8W - 1355lm	1803.AA.24.930.XX-Y
4000K - Ra90 - 14.8W - 1433lm	1803.AA.24.940.XX-Y

#### 1-10V dim & Push dim 500mA (Driver 490.25.20 incl.)

2700K - Ra90 - 14.8W - 1295lm	1803.AA.25.927.XX-Y
3000K - Ra90 - 14.8W - 1355lm	1803.AA.25.930.XX-Y
4000K - Ra90 - 14.8W - 1433lm	1803.AA.25.940.XX-Y

#### DALI dim 500mA (Driver 490.26.20 incl.)

2700K - Ra90 - 14.8W - 1295lm	1803.AA.26.927.XX-Y
3000K - Ra90 - 14.8W - 1355lm	1803.AA.26.930.XX-Y
4000K - Ra90 - 14.8W - 1433lm	1803.AA.26.940.XX-Y

#### Mains dim 500mA (Driver 493.27.20 incl.)

2700K - Ra90 - 14.8W - 1295lm	1803.AA.27.927.XX-Y
3000K - Ra90 - 14.8W - 1355lm	1803.AA.27.930.XX-Y
4000K - Ra90 - 14.8W - 1433lm	1803.AA.27.940.XX-Y

#### DALI dim / Dim to Warm 1800-3000K (Driver 490.26.20 incl.)

DTW (DALI dim) - 9.4W - 774lm	1803.AA.26.dtw.XX-Y
-------------------------------	---------------------

#### Mains dim / Dim to Warm 1800-3000K (Driver 497.27.20 incl.)

DTW (mains dim) - 9.4W - 774lm	1803.AA.27.dtw.XX-Y
--------------------------------	---------------------

Trapezium springs: 0000.00.00.000.00-**T**  
 Boobytrap springs: 0000.00.00.000.00-**B**



TRAPEZIUM SPRINGS



BOOBYTRAP SPRINGS



## Aster Mix IP54\*

### PRICES INCL. DRIVERS

#### Non dim 500mA (Driver 493.24.22 incl.)

2700K - Ra90 - 14.8W - 1295lm	1805.AA.24.927.XX-Y
3000K - Ra90 - 14.8W - 1355lm	1805.AA.24.930.XX-Y
4000K - Ra90 - 14.8W - 1433lm	1805.AA.24.940.XX-Y

#### 1-10V dim & Push dim 500mA (Driver 490.25.20 incl.)

2700K - Ra90 - 14.8W - 1295lm	1805.AA.25.927.XX-Y
3000K - Ra90 - 14.8W - 1355lm	1805.AA.25.930.XX-Y
4000K - Ra90 - 14.8W - 1433lm	1805.AA.25.940.XX-Y

#### DALI dim 500mA (Driver 490.26.20 incl.)

2700K - Ra90 - 14.8W - 1295lm	1805.AA.26.927.XX-Y
3000K - Ra90 - 14.8W - 1355lm	1805.AA.26.930.XX-Y
4000K - Ra90 - 14.8W - 1433lm	1805.AA.26.940.XX-Y

#### Mains dim 500mA (Driver 493.27.20 incl.)

2700K - Ra90 - 14.8W - 1295lm	1805.AA.27.927.XX-Y
3000K - Ra90 - 14.8W - 1355lm	1805.AA.27.930.XX-Y
4000K - Ra90 - 14.8W - 1433lm	1805.AA.27.940.XX-Y

#### DALI dim / Dim to Warm 1800-3000K (Driver 490.26.20 incl.)

DTW (DALI dim) - 9.4W - 774lm	1805.AA.26.dtw.XX-Y
-------------------------------	---------------------

#### Mains dim / Dim to Warm 1800-3000K (Driver 497.27.20 incl.)

DTW (mains dim) - 9.4W - 774lm	1805.AA.27.dtw.XX-Y
--------------------------------	---------------------

25° Lens: 0000.25.00.000.00-0  
 36° Lens: 0000.36.00.000.00-0  
 52° Lens: 0000.52.00.000.00-0

Available colors: 0000.00.00.000.XX-0  
 Other RAL colors on request

#### \*Possible Colors:

Aster Mix 1-Tone: 01, 18, 07, 03, 16  
 Aster Mix 2-Tone: 05, 11, 12  
 Aster Mix IP54: All colors possible  
 Other color combinations on request



01 White Matt Text.  
Standard



18 Grey Matt Text.  
Standard



07 Anthracite Matt Text.  
Standard



03 Black Matt Text.  
Standard



05 White + Black Matt  
Standard



11 Black + Gold Matt



12 White + Gold Matt



16 Gold Matt

